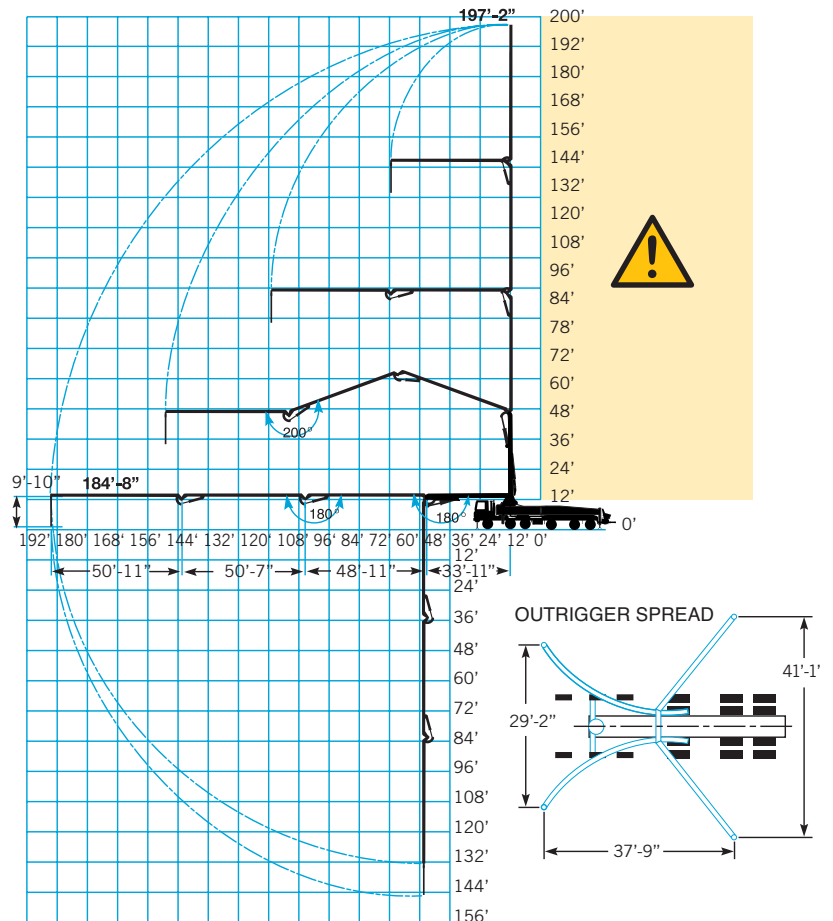


THE 61-METER 200-FOOT BOOM

Our longest boom for high rise, commercial work.

- 199'-5", 4-section boom
- Section lengths:
1st Section 34' 3rd Section 50'-8"
2nd Section 49' 4th Section 51'
- Unfolding height 51'-9"
- Effective horizontal reach is 184'-8"
- Vertical reach is 197'-2"
- Output to 220 yds/hr.
- Outrigger spread 41'-1"
- Overweight permits required daily-24-hour notice required



CONCRETE PLACING: 651-686-4274 or 1-800-CEMSTONE